

ST. PETERSBURG, FLORIDA

AL-613 (FAA)

RNAV (GPS) RWY 7

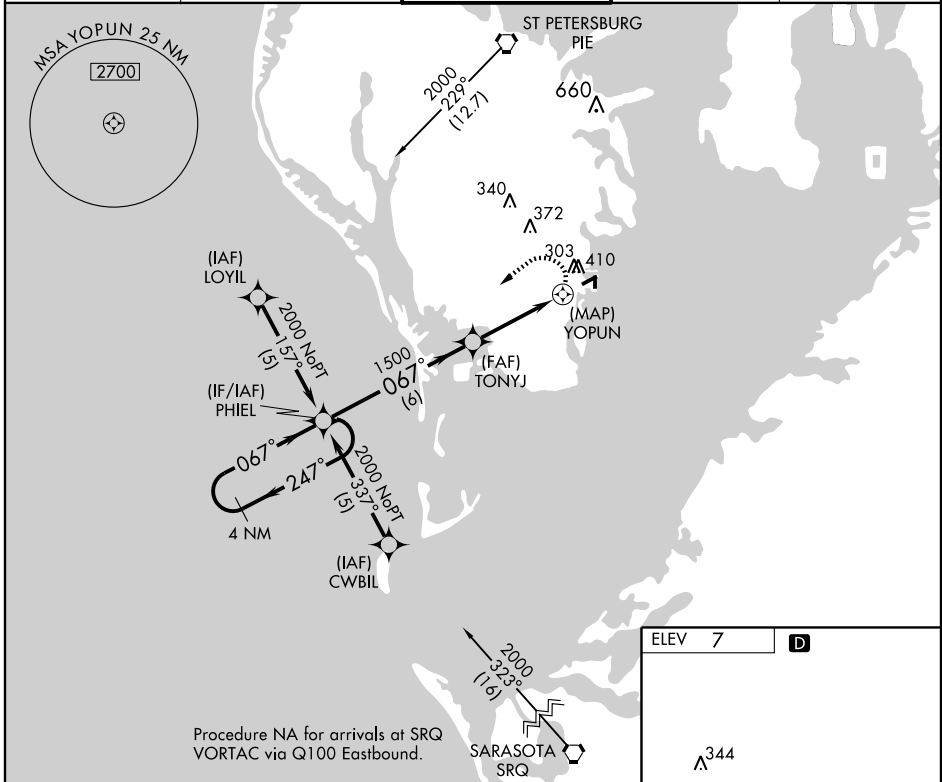
ST. PETERSBURG/ALBERT WHITTED (SPG)

APP CRS	Rwy Idg	2919
067°	TDZE	7
	Apt Elev	7

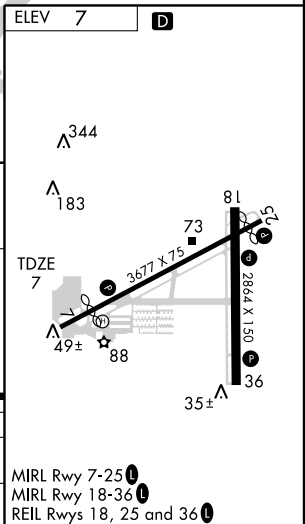
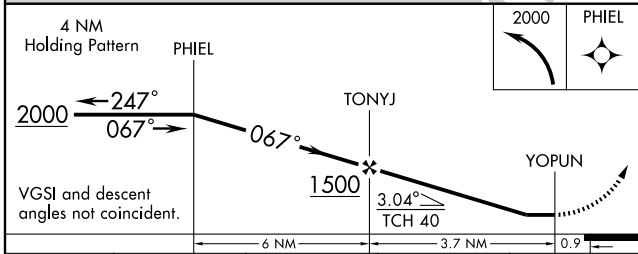
▼ DME/DME RNP-0.3 NA. Procedure NA at night. Visibility reduction by helicopters NA. When local altimeter setting not received, use Tampa Intl altimeter setting and increase all MDA 40 feet, LNAV Cat. C and Circling Cat. B and C visibility 1/4 mile.

MISSED APPROACH:
Climbing left turn to 2000 direct PHEL and hold.

ASOS 118.875	TAMPA APP CON 119.65 316.05 (EAST) 125.3 316.05 (WEST)	ALBERT WHITTED TOWER * 127.4 (CTAF) 0 257.6	GND CON 121.8	UNICOM 122.95
------------------------	--	---	-------------------------	-------------------------



Procedure NA for arrivals at SRQ VORTAC via Q100 Eastbound.



CATEGORY	A	B	C	D
LNAV MDA	600-1	593 (600-1)	600-1 1/2 593 (600-1 1/2)	NA
CIRCLING	720-1	713 (800-1)	720-2 713 (800-2)	NA

MIRL Rwy 7-25
MIRL Rwy 18-36
REIL Rwys 18, 25 and 36

SE-3, 04 JUN 2009 to 02 JUL 2009

SE-3, 04 JUN 2009 to 02 JUL 2009

ST. PETERSBURG, FLORIDA

Amdt 1 08325

27° 46' N-82° 38' W

ST. PETERSBURG/ALBERT WHITTED (SPG)

RNAV (GPS) RWY 7