

VORTAC PIE <b>116.4</b> Chan 111	APP CRS <b>158°</b>	Rwy Idg Rwy Idg (night only) TDZE Apt Elev	<b>2864</b> <b>2824</b> <b>6</b> <b>7</b>
--	------------------------	---	--

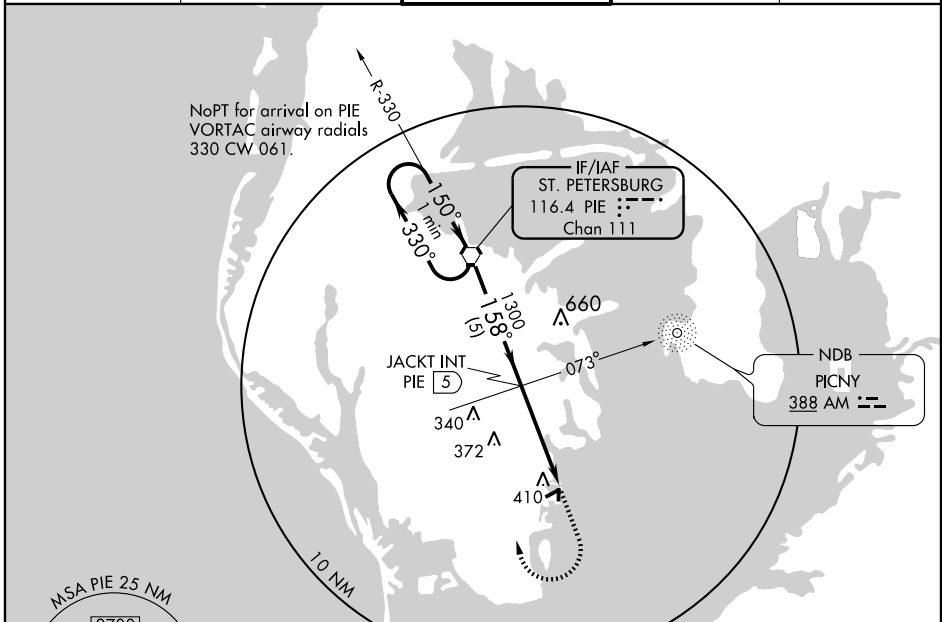
# VOR RWY 18

ST. PETERSBURG/ ALBERT WHITTED (SPG)

**⚠** If local altimeter setting not received, use Tampa Int'l altimeter setting and increase all MDAs 40 feet. Visibility reduction by helicopters NA. ADF or DME Required. VDP NA when using Tampa Int'l altimeter setting.

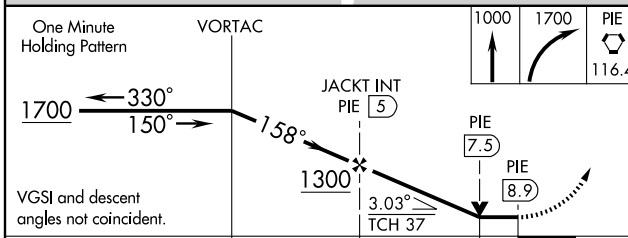
**⚠** MISSED APPROACH: Climb to 1000 then climbing right turn to 1700 direct PIE VORTAC and hold.

ASOS <b>118.875</b>	TAMPA APP CON <b>119.65 316.05 (EAST)</b> <b>125.3 316.05 (WEST)</b>	ALBERT WHITTED TOWER * <b>127.4 (CTAF) 257.6</b>	GND CON <b>121.8</b>	UNICOM <b>122.95</b>
------------------------	--	---	-------------------------	-------------------------

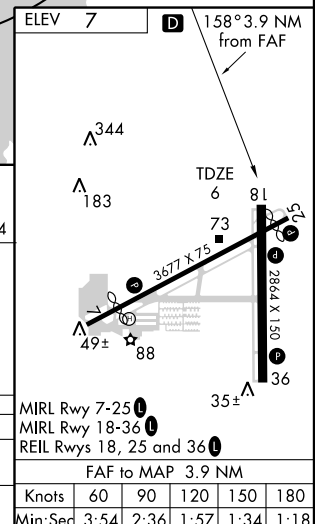


SE-3, 04 JUN 2009 to 02 JUL 2009

SE-3, 04 JUN 2009 to 02 JUL 2009



CATEGORY	A	B	C	D
S-18	660-1	654 (700-1)		NA
CIRCLING	720-1	713 (800-1)		NA



MIRL Rwy 7-25	
MIRL Rwy 18-36	
REIL Rws 18, 25 and 36	
FAF to MAP 3.9 NM	
Knots	60 90 120 150 180
Min:Sec	3:54 2:36 1:57 1:34 1:18